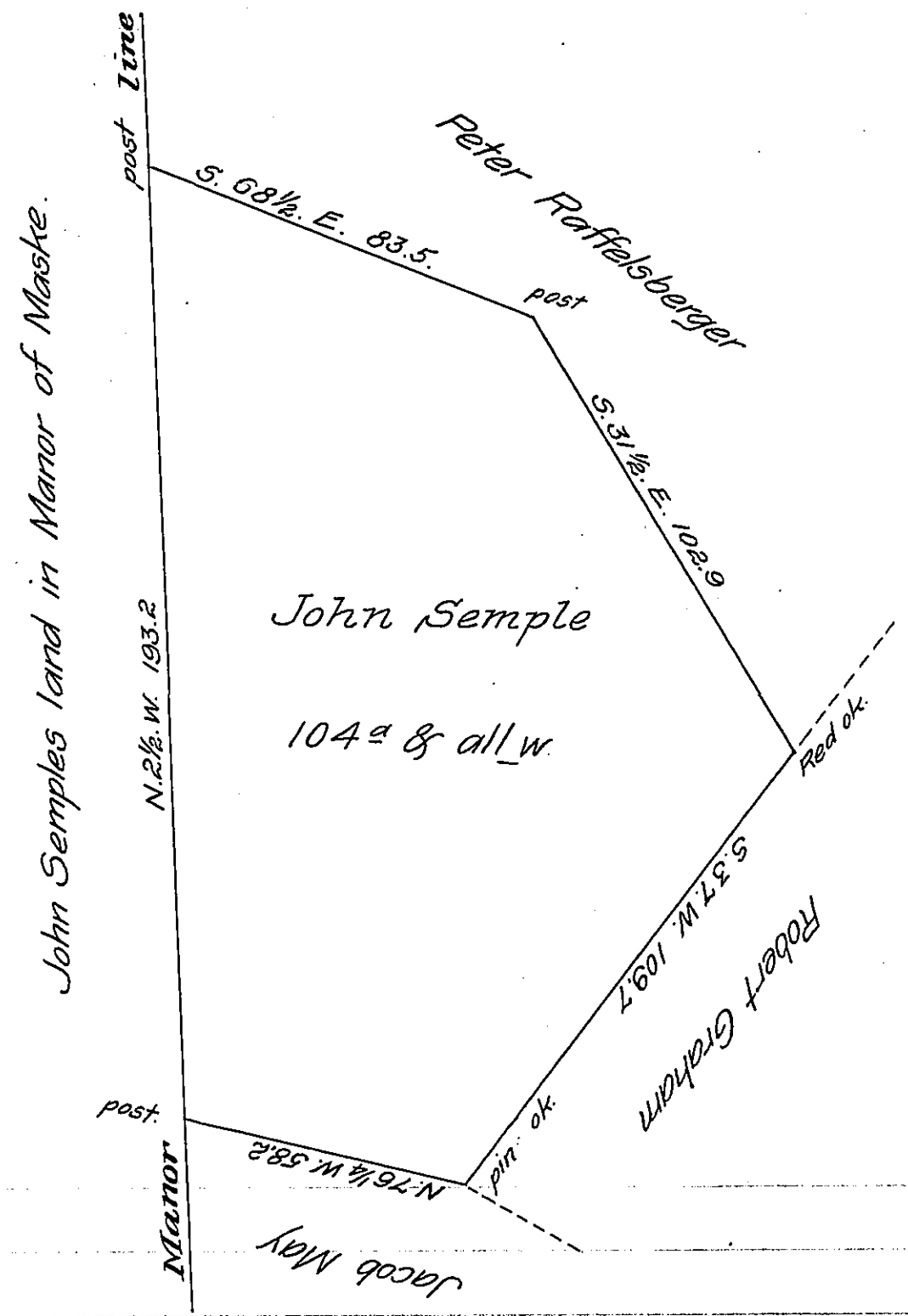


FORM No. 1.



Situate in Strabane Township Adams County Being part of a larger tract said to contain 290 1/2 acres Surveyed November 8th 1770 by Arch^d Mc Clean D.S. by warrant to John Semple dated February 22nd 1770 part of which is in the Manor of Maske, Divided from the residue January 22nd 1810.

By Sam^l Sloan D.S.

To Andrew Porter Esq^r
Surveyor General.

IN TESTIMONY that the above is a copy of the original remaining on file in the Department of Internal Affairs of Pennsylvania, made conformably to an Act of Assembly approved the 16th day of February 1833, I have hereunto set my hand and caused the Seal of said Department to be affixed at Harrisburg, this twenty second day of January 1907.

Isaac R. Brown
Secretary of Internal Affairs.